



education

Department:
Education
REPUBLIC OF SOUTH AFRICA

**NATIONAL
SENIOR CERTIFICATE**

GRADE 12

ENGINEERING GRAPHICS AND DESIGN P2

FEBRUARY/MARCH 2010

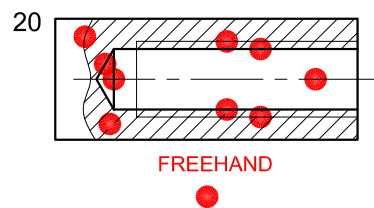
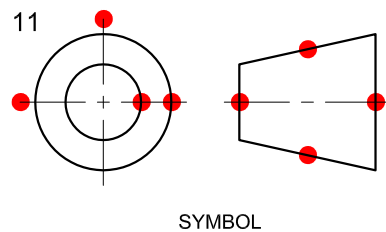
MEMORANDUM

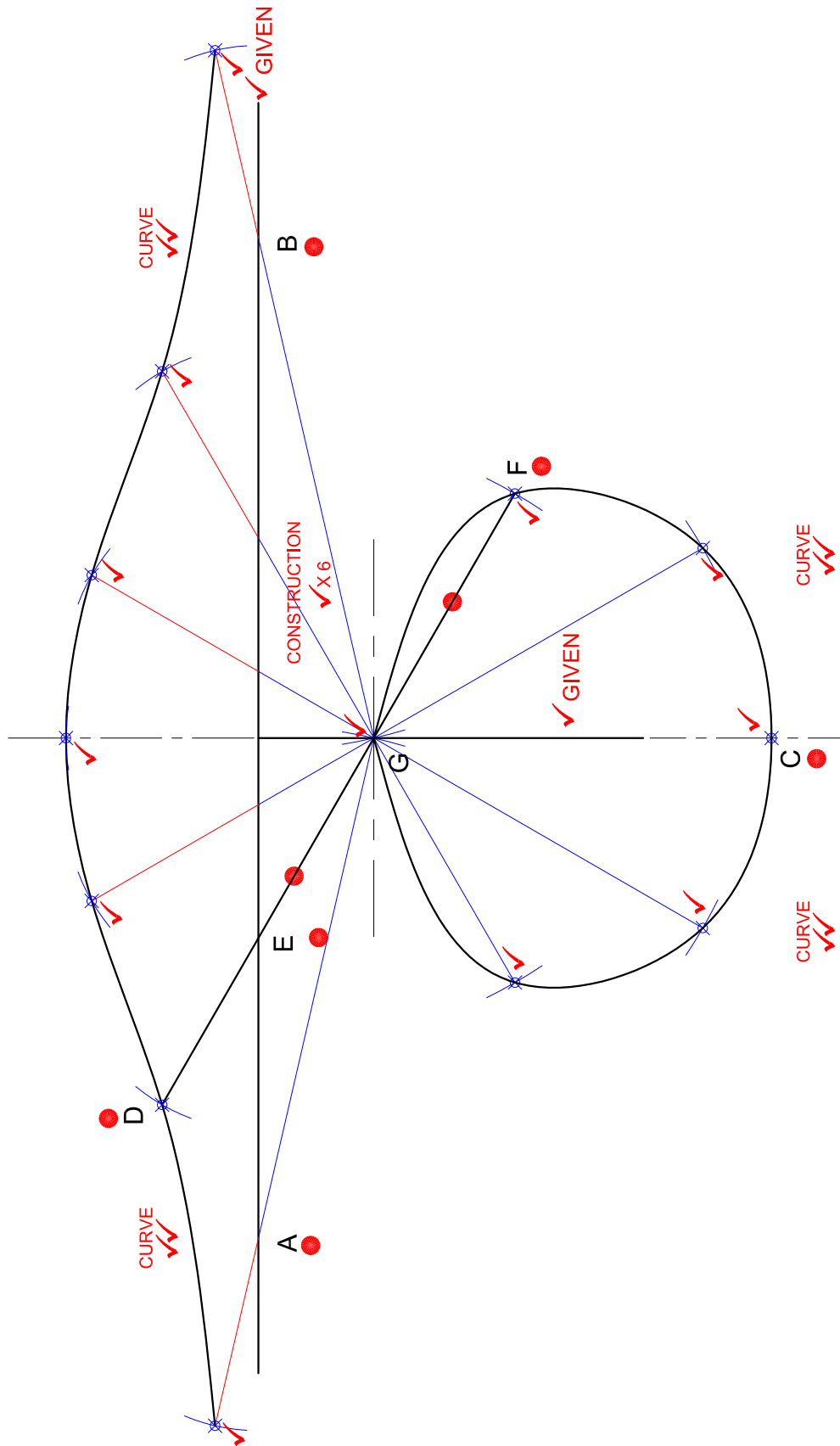
MARKS: 200

This memorandum consists of 5 pages.

ANSWERS		
1	ADAPTOR PLATE	1
2	25-05-09	1
3	PP STEYN	1
4	Q1/DOE/10	1
5	10	1
6	9	1
7	GRINDING	1
8	DETAILED DRAWING	1
9	TOP VIEW	1
10	11	1
11	B 52 C 60 D Ø22 E M8	4
12	64	1
13	WELDING	1
14	WELD ALL AROUND	1
15	REVOLVED SECTION	1
16	0,3	1
17	0,2	2
18		4
19		5

TOTAL: 30

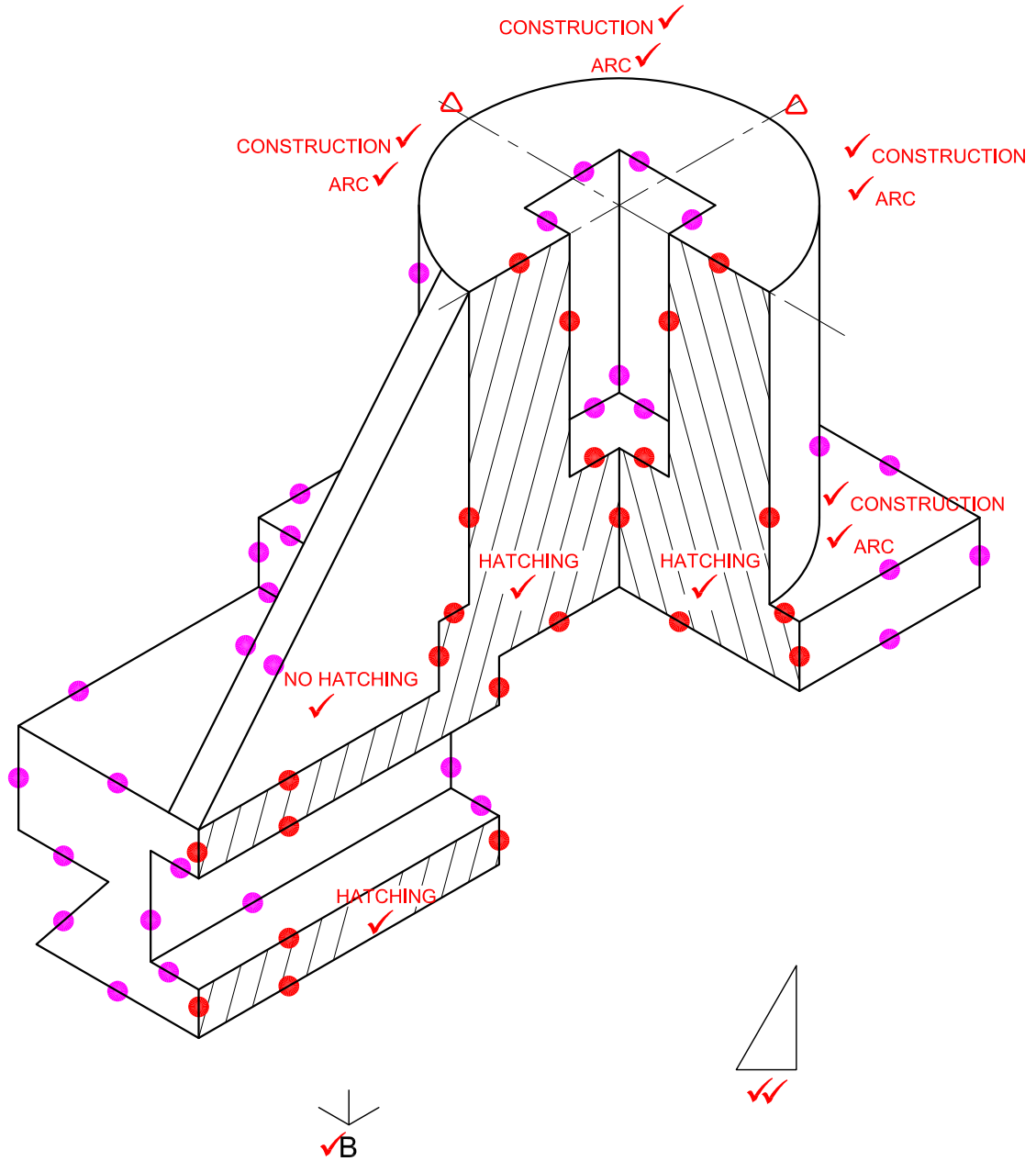




ASSESSMENT CRITERIA

GIVEN + LABELS	6
CONSTRUCTION	6
LOCUS D + CURVE	11
LOCUS F + CURVE	10
TOTAL	33

PAPER 2 QUESTION 1
 GRADE 12
 FEBRUARY/MARCH 2010
 MEMORANDUM



ASSESSMENT CRITERIA

AUXILIARY VIEW + PLACING	3
ISO' CIRCLES + CONSTR' + CENTRE LINES	9
ISO' + NON-ISO' LINES	15½
SECTIONED SURFACES	11½
HATCHING/NO HATCHING	4
TOTAL	43

PAPER 2 QUESTION 3
 GRADE 12
 FEBRUARY/MARCH 2010
 MEMORANDUM

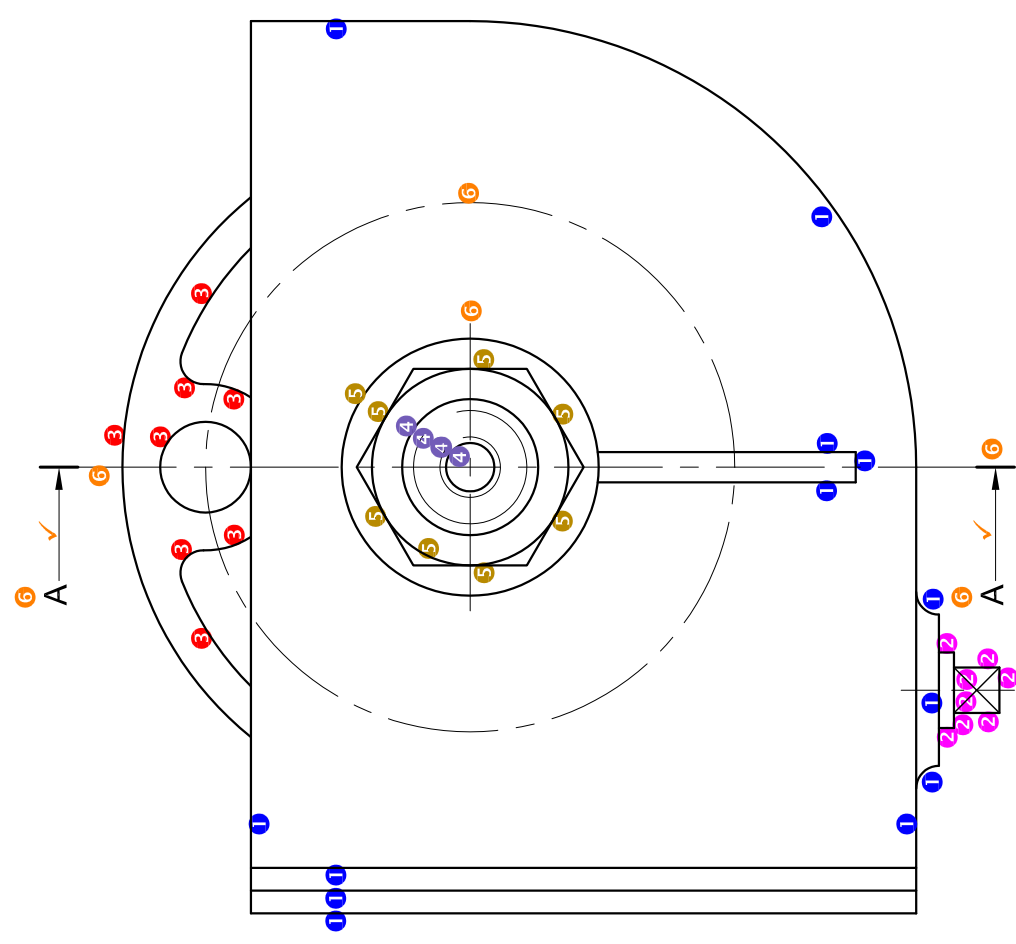
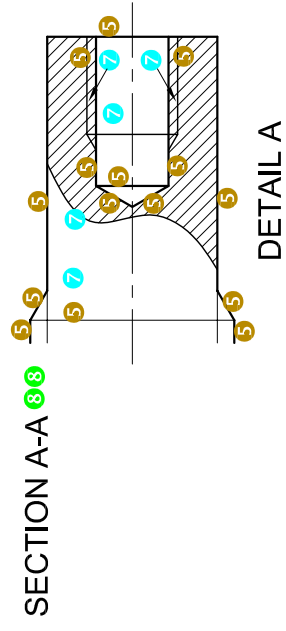
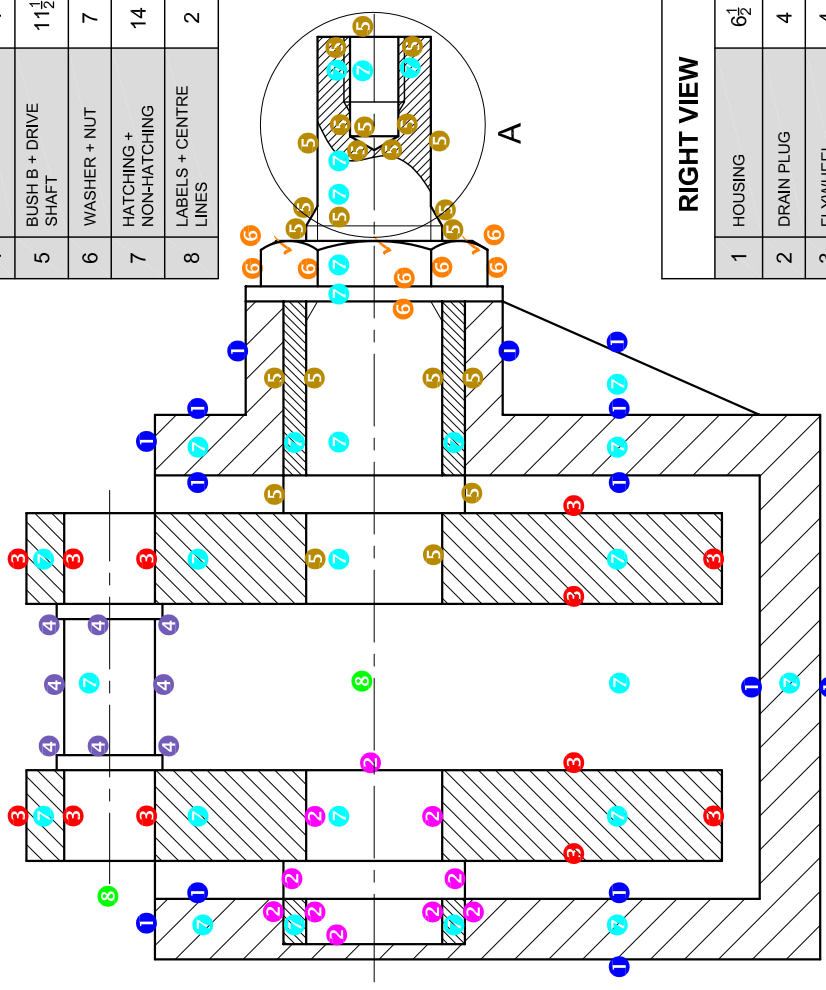
SECTIONAL VIEW

1	HOUSING	7
2	BUSH A + SHORT SHAFT	5
3	FLYWHEELS	6
4	JOURNAL	4
5	BUSH B + DRIVE SHAFT	11½
6	WASHER + NUT	7
7	HATCHING + NON-HATCHING	14
8	LABELS + CENTRE LINES	2

RIGHT VIEW

1	HOUSING	6½
2	DRAIN PLUG	4
3	FLYWHEEL	4
4	DRIVE SHAFT	2
5	NUT + WASHER	4
6	CUTTING PLANE + CENTRE LINES	5
7	3RD ANGLE RIGHT VIEW	2
8	ASSEMBLY	10
TOTAL		94

NOTE: SHOULD THE CANDIDATE HAVE ASSEMBLED THE DRAWING INCORRECTLY, ANY MARK ALLOCATED TO A PARTICULAR LINE ON THE ASSEMBLY CAN ONLY BE AWARDED TO THE LINE ONCE.



NOTE: THE ARROW MUST POINT FROM THE LEFT.